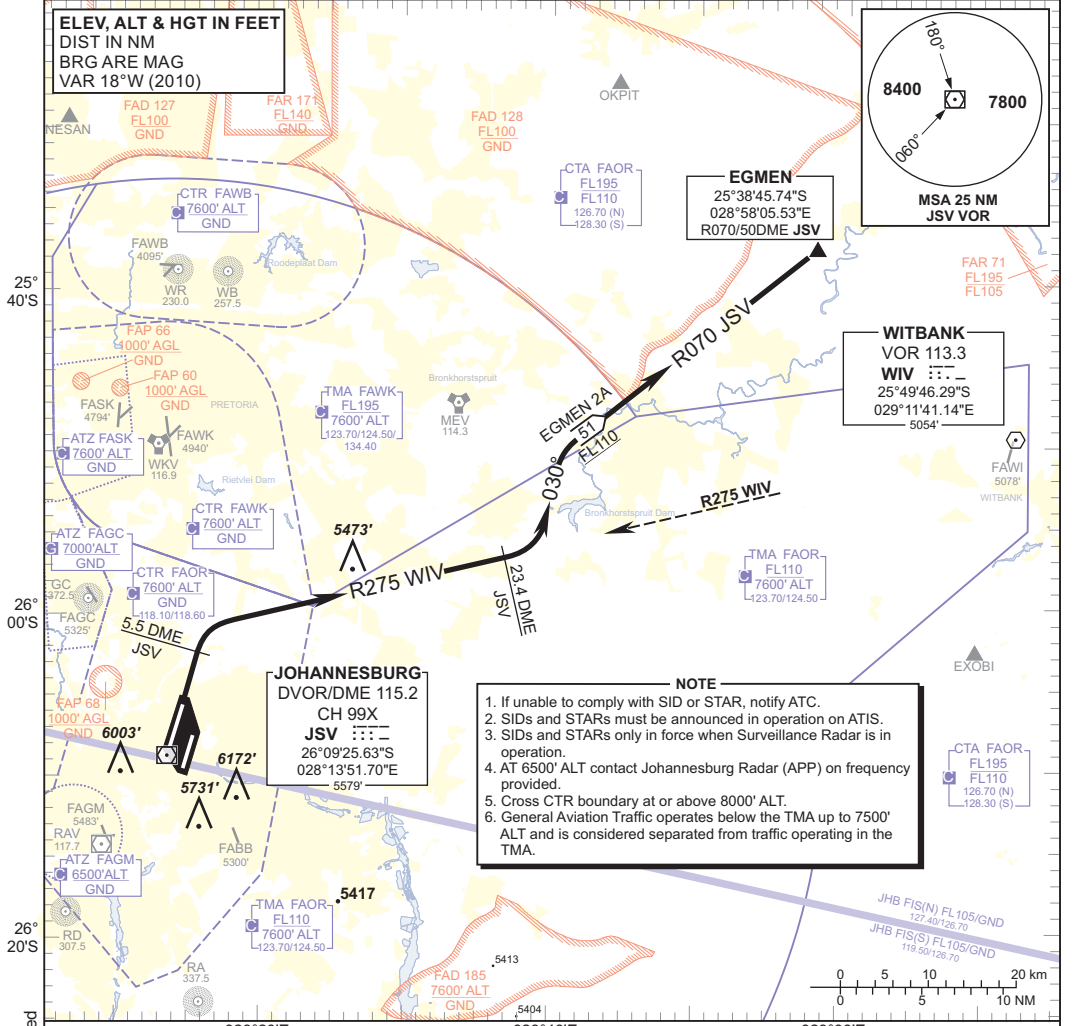


**STANDARD DEPARTURE
CHART -
INSTRUMENT
(SID)**

TRANSITION ALTITUDE
8000'
TRANSITION LEVEL
ATC

RADAR APP S 124.50 TWR E 118.60
E 124.50 W 118.10
W 123.70 ATIS 126.20
DIR 121.40 115.20
ACC N 126.70 SMC 121.90

JOHANNESBURG
(O.R. TAMBO INTERNATIONAL)
RWY 03L
EGMEN 2A



JOHANNESBURG
DVOR/DME 115.2
CH 99X
JSV $\dots\dots$
26°09'25.63"S
028°13'51.70"E
5579'

- NOTE**
1. If unable to comply with SID or STAR, notify ATC.
 2. SIDs and STARs must be announced in operation on ATIS.
 3. SIDs and STARs only in force when Surveillance Radar is in operation.
 4. AT 6500' ALT contact Johannesburg Radar (APP) on frequency provided.
 5. Cross CTR boundary at or above 8000' ALT.
 6. General Aviation Traffic operates below the TMA up to 7500' ALT and is considered separated from traffic operating in the TMA.

Location Indicator FAOR / CHANGE: NDB JB/JUN & JA decommissioned

**EGMEN 2A.
RWY 03L**

Climb to FL090, maintain RWY track to 5.5 DME JSV then turn right to intercept R275 WIV (INBD). At 23.4 DME JSV turn left onto track 030° to intercept R070 JSV (OUBD) to EGMEEN. Cross 15 DME JSV at FL090 or above.

Restricted to a minimum climb gradient of 4.5% to CTR boundary.
4.5% @ 140KT IAS = 638 FPM
4.5% @ 180KT IAS = 820 FPM
4.5% @ 220KT IAS = 1003 FPM

COMMUNICATION FAILURE PROCEDURE (Squawk 7600)

Comply with EGMEN 2A SID, climbing to FL090 or maintain last assigned level, whichever is the highest. At EGMEEN set course as per flight plan and climb to flight plan level.

Aircraft wishing to return must continue to the SID termination point and climb to the last assigned level or MSA if cleared level is below MSA. At EGMEEN proceed to OKPIT and comply with the OKPIT 4A RWY 03R STAR Communication Failure Procedure.